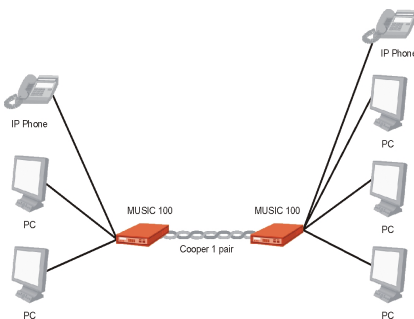


KEYMILE MUSIC 100 offers your customers a new dimension for high-speed access to data networks.



KEYMILE MUSIC 100 is a cost-effective solution for small and medium-sized businesses and public service providers. MUSIC 100 combines state-of-the-art xDSL transmission technology, routing and four 10Base-T Ethernet interfaces in a single device. It allows the interconnection of several PCs or LANs at the same location, as well as a high-speed link via a telephone line to a WAN or Internet service provider.

TRANSMISSION SYSTEM, ROUTER AND MINI-HUB

MUSIC 100 is a high-speed xDSL modem for cost-optimised Internet/Intranet access via dark copper lines focused for small office and home office. Until now such connections over greater distances have required three systems at both ends:

- A hub to interconnect the LAN segments at the customer end
- A router or bridge connecting the LAN to the transmission system
- A system for transmission of data over long distances

MUSIC 100 combines all three functions in a single device.

MUSIC 100 features a flexible xDSL transmission interface for up to 2 Mbps. The bridge/router function supports all conventional LAN/WAN protocols for access to the Internet, leased line or frame relay networks.

The mini-hub can be used to set up smaller PC networks comprising several workplaces.

FLEXIBLE TRANSMISSION

Within the maximum transmission rate, service rates can be freely selected in both directions. Depending on the application, the system can be configured for symmetrical or asymmetrical data traffic.

MANAGEMENT

The flexible management concept allows configuration, operation and monitoring:

- From the transmission end via the xDSL interface
- From the LAN/PC end using the TCP/IP protocol
- Locally via an RS-232 interface

TECHNICAL DATA

Main characteristics	Selectable service rates	64 kbps to 2304 kbps (upstream m x 64 kbps, m = 1 - 36) (downstream n x 64 kbps, n = 1 - 36)
	Integration in Power supply and consumption Dimensions (w x d x h)	UMUX platform 85..264 VAC, 47..63 Hz; < 6 W 222 x 155 x 37 mm
Transmission	Multiple rate Medium	Up to 2320 kbps one twisted pair
Router/bridge functionality	LAN protocols Routing protocols WAN protocols	IP, IPX (IEEE 802.3) Static routing, RIP HDLC, PPP, Frame Relay (Including RFC1490)
Mini-hub	Interoperates with	Nortel, Cisco, 3Com, etc.
	Interfaces	Four RJ45, 10Base-T

HEADQUARTERS
Austria

KEYMILE AG
Leberstrasse 20
A-1110 Vienna
Phone +43 1 610 20-0
Fax +43 1 610 20-2356

LOCAL CONTACT
United Kingdom

KEYMILE Ltd
Tate House, Watermark Way
Foxholes Business Park
Hertford, SG13 7TZ
Phone +44 1992 50 7000
Fax +44 1992 58 1513

info@keymile.com
www.keymile.com